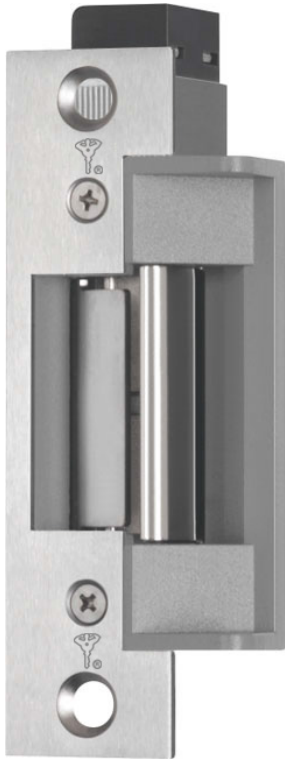


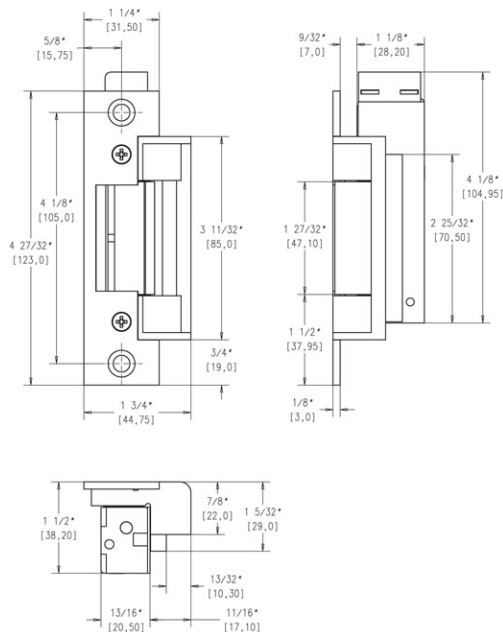
Electric strike ES-76-54UR----Q31



Designed for heavy-duty applications, the all-in one PENTA offers dual voltage and field selectable fail secure/fail safe operation. Deep latch cavity accommodates cylindrical locksets with a 5/8" to 3/4" throw (3/4" requires 1/8" door gap) in metal, wood or aluminum frames.

Overview of Advantages

- Latch monitoring
- BHMA Grade 1
- UL 1034 Burglary Resistant 1,500 lbs. Static strength 70 ft-lbs. Dynamic strength Endurance rating 500,000 UL-tested, 1,500,000 factory tested
- Strike depth – 1-1/2"
- Field selectable fail secure/fail safe
- Dual voltage 12/24 VAC or VDC
- Fully reversible for right or left-hand doors
- Continuous duty operation (DC)
- Mounting Kit
- 5 years limited warranty
- Manufactured to the highest standards in Germany



Technical data

Voltage	12/24 V AC/DC eE
Monitoring contact (RR)	Yes
Fail-locked	Yes
Current on AC (12 V)	130 mA
Current on DC (24 V)	210 mA
Current on AC (12 V)	70 mA
Current on DC (24 V)	105 mA

Article number

ES-76-54UR----Q31